



CONCRETE LOOK

SYNCHRONIC™
COLORBODY™ PORCELAIN



 dalTile®
IMAGINE WHAT'S POSSIBLE™

SYNCHRONIC™

COLORBODY™ PORCELAIN

Explore new terrain with Synchronic™, an ultra-durable and high-performing ColorBody™ porcelain tile. An array of neutral colors in a matte finish are available in 24 x 24, 18 x 36, and 12 x 24. A multi-dimensional textured finish is featured in the 12 x 24 size and is suitable for exterior floor use. Proudly made in the U.S.A., Synchronic delivers a minimalistic concrete look with quality and style.

CONCRETE LOOK

USAGE



SPECIAL FEATURES

NOT APPLICABLE FOR ALL PRODUCTS IN THIS SERIES. SEE CHARTS FOR FULL PRODUCT DETAILS.

Cover photo features Synchronic™ Beige 18 x 36 matte on the floor and Xteriors™ Multiquartz20™ White 24 x 24 on the exterior floor.

Above photo features Synchronic™ Grey 18 x 36 matte on the floor.

SIZES:



24 x 24
Floor Tile



18 x 36
Floor Tile



12 x 24
Floor Tile



1 x 6 Straight-joint
Mosaic

FINISHES: MATTE | TEXTURED

COLOR PALETTE



WHITE



BIEGE



TAUPE



GREY

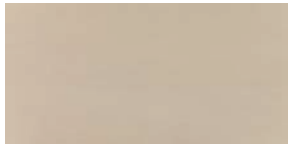


CHARCOAL

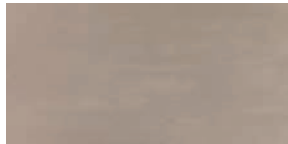
FLOOR TILE – MATTE



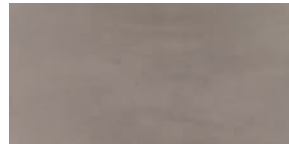
WHITE SY30



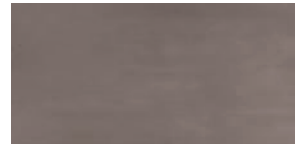
BEIGE SY31



TAUPE SY32



GREY SY33

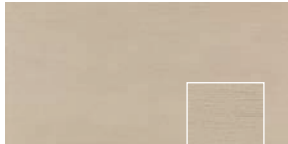


CHARCOAL SY34

FLOOR TILE – TEXTURED



WHITE SY30



BEIGE SY31



TAUPE SY32



GREY SY33

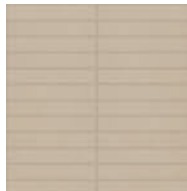


CHARCOAL SY34

1 X 6 STRAIGHT-JOINT MOSAIC



WHITE SY30



BEIGE SY31



TAUPE SY32



GREY SY33



CHARCOAL SY34



SLIP RESISTANT



WATERPROOF



STAINPROOF



DENTPROOF



SCRATCH-RESISTANT



FIRE-RESISTANT*
*Not Applicable to Mesh-Mounted Mosaics



CLIMATEPRO™



SIMPLICLEAN™

VISIT THE WHY TILE PAGE AT WWW.DAL TILE.COM FOR A COMPLETE LIST OF QUALIFICATIONS AND EXCLUSIONS.

SYNCHRONIC™

COLORBODY™ PORCELAIN

CONCRETE LOOK

SIZES

			Thickness	Sq. Ft./ Carton	Pieces/ Carton
	24 x 24 Floor Tile*	(23-3/8" x 23-3/8") (59.44 cm x 59.44 cm)	5/16"	15.21	4
	18 x 36 Floor Tile*	(17-9/16" x 35-3/16") (44.65 cm x 91.44 cm)	5/16"	12.90	3
	12 x 24 Floor Tile	(11-5/8" x 23-3/8") (29.56 cm x 59.44 cm)	5/16"	17.02	9
	1 x 6 Straight-joint Mosaic* (Mesh-mounted)	(12" x 12" Sheet) (30.48 cm x 30.48 cm Sheet)	5/16"	10	10

*Available in Matte finish only.

APPLICATIONS

	Target DCOF wet	Suitable
Dry & Level – Interior Floor	N/A	✓
Wet & Level – Interior Floor	≥ 0.42	✓
Shower Floors (Residential or Light Commercial)	≥ 0.42	✓*
Exterior Floor Applications, (including patios, pool decking & other wet areas with minimal footwear)	≥ 0.60	†
Ramps & Inclines	≥ 0.65	
Walls/Backsplashes	N/A	✓
Countertops	N/A	✓
Pool Linings	N/A	✓*

A DCOF value of ≥0.42 is the standard for tiles specified for level interior spaces expected to be walked upon when wet, as stated in ANSI A137.1-A326.3. For more information about DCOF and the DCOF AcuTest™, visit daltile.com/DCOF.

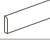


APPLICATION NOTES:

Suitable for exterior applications (provided it is noted as suitable in the applications chart above) in freezing and non-freezing climates, when proper installation methods are followed.

* Mosaic tile only.

† Textured finish only. Due to limitations of the test, measured DCOF value is not an appropriate indicator of performance for all product types. For such products, different criteria are used to determine use classification per the requirements of Section 3.4 of ANSI A326.3-2021. For more information, visit daltile.com/DCOF.

TRIM

	Type	Number	Size	Pieces/Carton
	Floor Bullnose	P43F9	3 x 24	10
	Cove Base	P36C9	6 x 12	22
	Cove Base Corner	PC36C9	1 x 6	15

INSTALLATION

Grout Joint Recommendation

Floor: 3/16"

Mosaic: 1/8"

Shade Variation



Medium (V2)

PERFORMANCE CHARACTERISTICS

	ASTM#	Result
Water Absorption	C373	< 0.5%
Breaking Strength	C648	> 275 lbs
Scratch Hardness	MOHS	8.0
Chemical Resistance	C650	Resistant

For additional information on test results, visit us at: daltile.com/information/TestResults.

DURABILITY

Floor Surface Wear Resistance

1 Residential Bathrooms	3	All Residential / Light Commercial
2 All Residential Areas	④	All Residential / Commercial

NOTES

Since there are variations in all fired ceramic and natural products, tile and trim supplied for your particular installation may not match samples. Final confirmation should be made from actual tiles and trim prior to installation. Manufactured in accordance with ANSI A137.1 standards.

To achieve optimal results, all tile should be selected from multiple cartons and shading and graphic arrangement planned prior to installation.

Not for use on ramps. Water, oil, grease, improper drainage and certain footwear can create slippery conditions. Floor applications expected to be exposed to these conditions require extra caution in product selection.

For additional information refer to "Factors to Consider" at: daltile.com/Factors.

Special consideration needs to be given when installing tiles greater than 15 inches. Please refer to daltile.com/LargeTiles for more information.

Special care should be taken when grouting with dark pigmented colors. A grout release is recommended to prevent finely powdered pigments from lodging in the pores of the surface. Use of a latex modified thin-set is recommended for installation.



All or select items within this series meet the requirements for these qualifications. For more information, visit daltile.com.



LEARN MORE

7834 C.F. Hawn Freeway,
Dallas, Texas 75217 | 1.800.933.TILE

To view the complete collection of Daltile® products and information, visit our website at daltile.com.



IMAGINE WHAT'S POSSIBLE™

©2022 Daltile (5/22)