



CONCRETE LOOK

UNITY™
COLORBODY™ PORCELAIN

UNITY™

COLORBODY™ PORCELAIN

Chic Blend of Popular Stone Visuals

Your space requires peak performance and outstanding durability. Your design, however, calls for contemporary style and sophistication. This can be achieved with the ColorBody™ porcelain line, Unity™. This double-load porcelain tile is one of the toughest tiles available, yet it doesn't compromise on style. Style and performance unite with Unity from Daltile.

- **DOUBLE-LOAD PORCELAIN PRODUCED WITH MICROPOWDERS**
 - Offers the high performance of double-load ColorBody™ porcelain
 - Creates a more uniform visual for contemporary minimalist look
- **TRU-EDGE™**
 - Rectified for a seamless, unified look in large areas
- **CONTEMPORARY COLOR PALETTE & VISUAL**
 - Available in six contemporary colors
 - Textured, unpolished and polished surfaces provide options for any space



CONCRETE
LOOK

USAGE



SPECIAL FEATURES

NOT APPLICABLE
FOR ALL PRODUCTS
IN THIS SERIES. SEE
CHARTS FOR FULL
PRODUCT DETAILS.

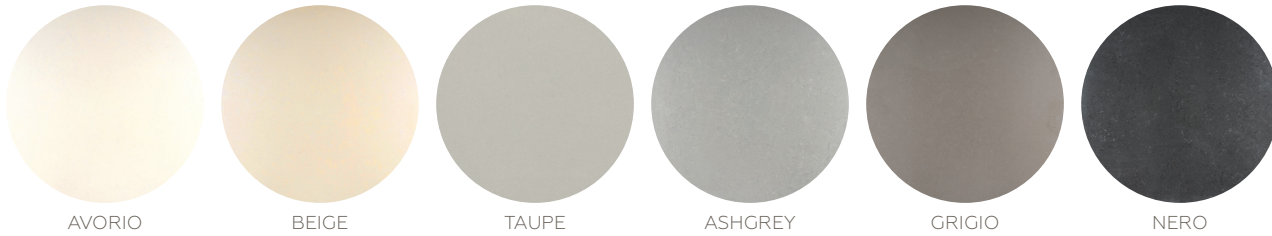
Cover photo features Unity™ Avorio 12 x 12 matte on the floor.
Above photo features Unity™ Avorio 12 x 12 matte on the floor.

SIZES:

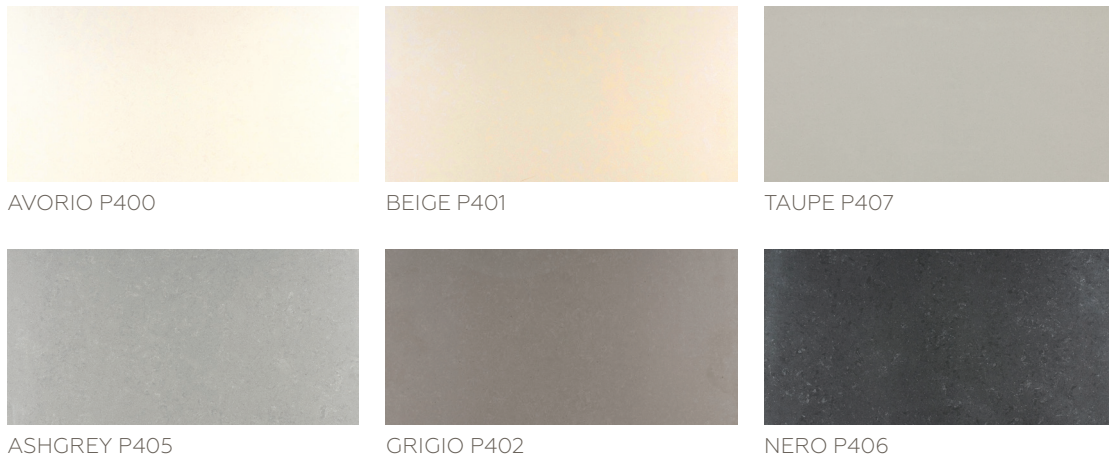


FINISHES: MATTE | GLOSSY | TEXTURED

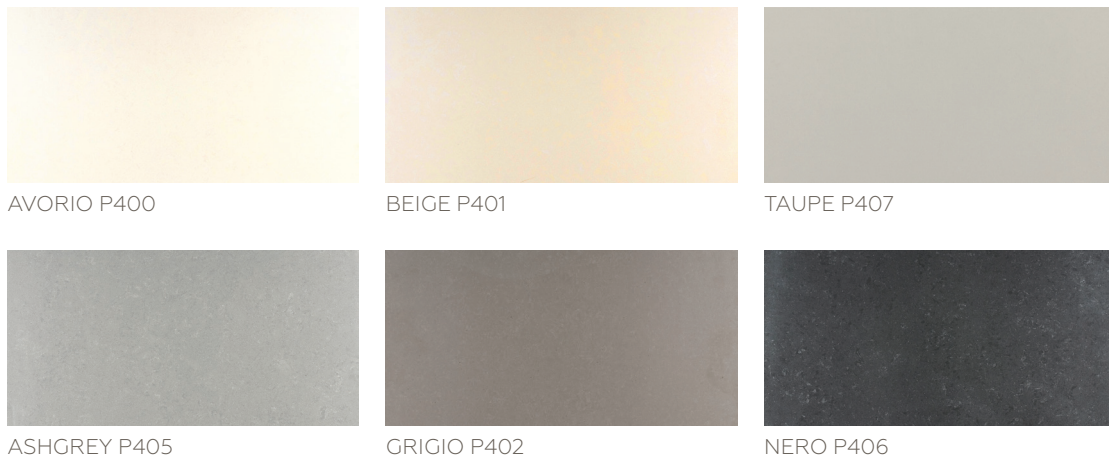
COLOR PALETTE



POLISHED FIELD TILE



UNPOLISHED FIELD TILE



SLIP RESISTANT



WATERPROOF



STAINPROOF



DENTPROOF



SCRATCH-RESISTANT™
*Applicable to products with Matte and Textured Finishes



FIRE-RESISTANT

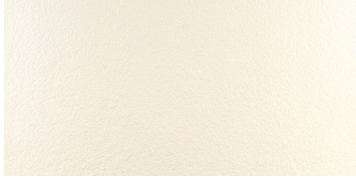


INDOOR/OUTDOOR

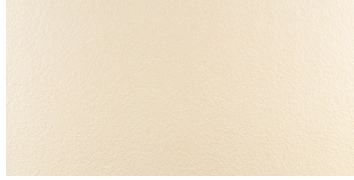


SIMPLICLEAN™

TEXTURE FIELD TILE



AVORIO P400



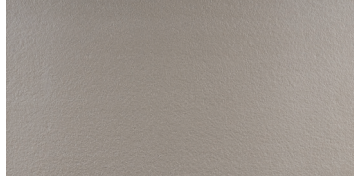
BEIGE P401



TAUPE P407



ASHGREY P405

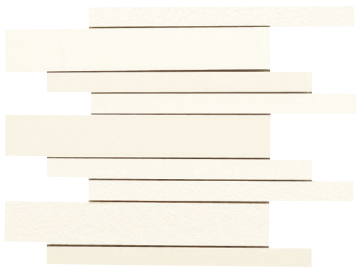


GRIGIO P402

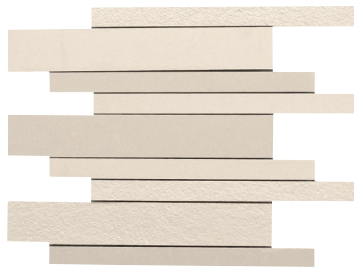


NERO P406

DECORATIVE ACCENTS



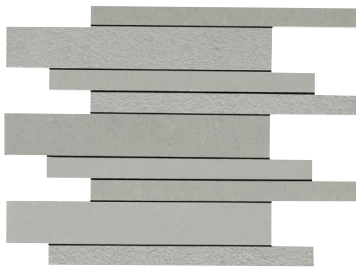
AVORIO P400
12 x 12 Modern Liner



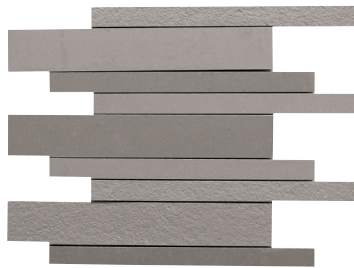
BEIGE P401
12 x 12 Modern Liner



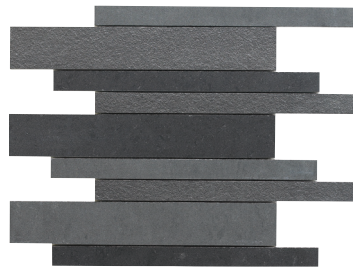
TAUPE P407
12 x 12 Modern Liner



ASHGREY P405
12 x 12 Modern Liner



GRIGIO P402
12 x 12 Modern Liner



NERO P406
12 x 12 Modern Liner

SIZES

			Thickness	Sq. Ft./ Carton	Pieces/ Carton
	24 x 24 Floor Tile*	(23-1/2" x 23-1/2") (59.7 cm x 59.7 cm)	3/8"	15.28	4
	12 x 24 Floor Tile	(11-11/16" x 23-1/2") (29.7 cm x 59.7 cm)	3/8"	15.26	8
	12 x 12 Floor Tile*	(11-11/16" x 11-11/16") (29.7 cm x 29.7 cm)	3/8"	10.44	11
	12 x 12 Modern Liner†	(11-11/16" x 11-11/16") Sheet (29.7 cm x 29.7 cm Sheet)	3/8"	N/A	11

* Available in Matte and Polished only
† Available in a combination of surfaces

APPLICATIONS

	Target DCOF wet	Suitable
Dry & Level – Interior Floor	N/A	✓
Wet & Level – Interior Floor	≥ 0.42	✓*
Shower Floors (Residential or Light Commercial)	≥ 0.42	
Exterior Floor Applications (including patios, pool decking & other wet areas with minimal footwear)	≥ 0.60	✓**
Ramps & Inclines	≥ 0.65	
Walls/Backsplashes	N/A	✓
Countertops	N/A	✓
Pool Linings	N/A	

A DCOF value of ≥0.42 is the standard for tiles specified for level interior spaces expected to be walked upon when wet, as stated in ANSI A137.1-A326.3. For more information about DCOF and the DCOF AcuTest™, visit daltile.com/DCOF.

APPLICATION NOTES:

Suitable for exterior applications (provided it is noted as suitable in the applications chart above) in freezing and non-freezing climates, when proper installation methods are followed.

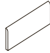
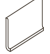

- * Matte and Textured only
- ** Textured only

PERFORMANCE CHARACTERISTICS

	ASTM#	Result
Water Absorption	C373	< 0.5%
Breaking Strength	C648	> 275 lbs
Scratch Hardness	MOHS	8.0
Chemical Resistance	C650	Resistant


For additional information on test results, visit us at: daltile.com/information/TestResults.

TRIM

	Type	Number	Size	Pieces/ Carton
	Bullnose	S-43C9S	3 x 12	30
	Cove Base	S-36C9TA	6 x 12	20
	Cove Base Outcorner	SC-36C9TA	1 x 6	10

Cove base trim is intended to coordinate with floor tile in the standard 90-degree installation position.

INSTALLATION

Grout Joint Recommendation	Shade Variation
1/8" (3/16" when installing tile with a length 15" or greater in a staggered brick-joint pattern; overlap should not exceed 33%.)	 Medium (V2)

DURABILITY

Floor Surface Wear Resistance		
1 Residential Bathrooms	3	All Residential / Light Commercial
2 All Residential Areas	④	All Residential / Commercial

NOTES

Since there are variations in all fired ceramic and natural products, tile and trim supplied for your particular installation may not match samples. Final confirmation should be made from actual tiles and trim prior to installation. Manufactured in accordance with ANSI A137.1 standards.

Not for use on ramps. Water, oil, grease, improper drainage and certain footwear can create slippery conditions. Floor applications expected to be exposed to these conditions require extra caution in product selection.

For additional information refer to "Factors to Consider" at: daltile.com/Factors.

Random visuals enhance the natural beauty of this product. To achieve optimal results, all tile should be selected from multiple cartons and shading and graphic arrangement planned prior to installation.

Special consideration needs to be given when installing tiles greater than 15 inches. Please refer to daltile.com/LargeTiles for more information.

Special care should be taken when grouting with dark pigmented colors. A grout release is recommended to prevent finely powdered pigments from lodging in the pores of the surface. Use of a latex modified thin-set is recommended for installation.

 **PRE-CONSUMER RECYCLED MATERIALS**

All or select items within this series meet the requirements for these qualifications. For more information, visit daltile.com.