

## GENERAL GUIDELINES

- **A 12 VOLT DC POWER SUPPLY MUST BE USED!**
- All wiring must meet NEC® or local codes.
- 20/2 solid wire is recommended from power supply to fixtures and between fixtures. *(If 20/2 solid wire is not available, 20/2 stranded wire may also be used. Tin ends of wire if possible.)*
- A maximum of 60 watts of sempriaLED Lighting is allowed on a zone.
- Limit wire length to **30 feet** from power supply to lights.
- Place switches on the 120 volt side of the power supply.
- De-burr all WireWay edges to ensure wire safety.
- If other than Task specified dimmers are desired, call Task Lighting for instructions.
- **Improper installation or applying improper voltage to fixture will void warranty. See TaskLighting.com for full warranty info.**

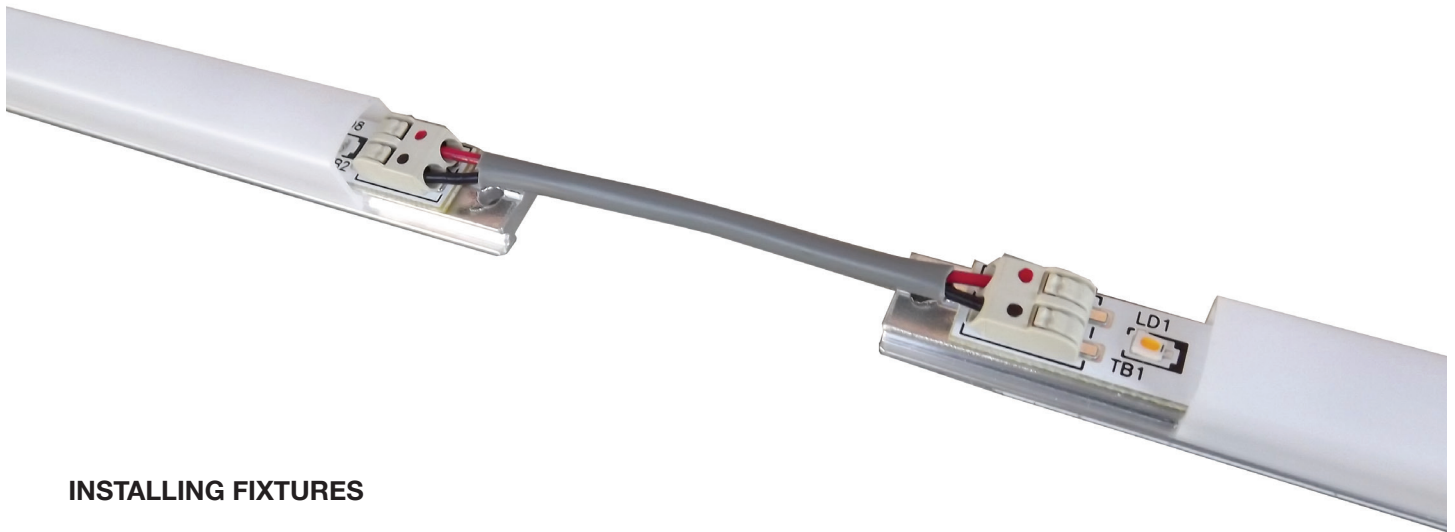
## POWER SUPPLY (12 volt DC) LOCATIONS

- Some power supplies may be conveniently concealed within our TR Series Angle Power Strip or Lighted Power Strip.
- A sink base or the top of a cabinet are other common power supply locations.
- Power Supply must be accessible.
- **DO NOT LOCATE POWER SUPPLY IN ATTIC.**

## PRE-WIRING

Run separate wire from power supply (12 volt DC) location to each zone. When total wattage of sempriaLED fixtures in zone exceeds 60 watts, use a second driver and run additional 20/2 solid wire for additional zone. Length of wire from power supply to first fixture in each zone is not to exceed 30 feet. Wiring may start at either end of fixture. (Option: separate wire may be run from driver to each fixture.)

## SEE POWER SUPPLY INSTALLATION INSTRUCTIONS FOR INSTALLING POWER SUPPLY



### INSTALLING FIXTURES

1. Slide lens back to expose connectors or remove lens from fixture.
2. Strip 1/4" from RED wire and insert into terminal block opening with RED marking. Strip BLACK wire, insert into terminal block opening with BLACK mark. (If using 20/2 stranded wire, ends must be tinned. Depress terminal block tab with ball point pen and insert wire.)
3. Cut wires to fit between adjacent fixtures. Insert wires into terminal blocks, maintaining polarity (RED wire to RED terminal, BLACK wire to BLACK terminal.) MAINTAIN POLARITY OR THE FIXTURE WILL NOT WORK.
4. If fixture does not light, reverse wires.
5. Mounting surface must be finished and dust-free for mounting tape to properly adhere. Remove backing from mounting tape and press fixture firmly into place.
6. Using screws provided, secure fixture in place. **DO NOT** pierce LED strip with screws, nails, staples, or any other mechanical device.
7. Slide or snap lens back into place.

### NOTE:

If using stranded wire we recommend tinning the end of the wire first. If stranded wire is used without tinning, terminal block tabs must be depressed when inserting wires. Note that wiring with untinned stranded wire may result in a poor connection.

### WHEN USING TWO POWER SUPPLIES:

