



Part Number	Description
T-WAV-AC120V-R	120V AC/AC Smart Receiver designed to fit behind a 120V - 240V switch or outlet and turn any 120V - 240V product or lighting into an App or Voice controlled connected device. Allows for on / off and dimming capabilities. NOTE: Not every light is dimmable. Please read through instructions closely, and never use the WAV 120V AC/AC Smart Receiver to dim a non-dimmable light.

Overview of WAV 120V AC/AC Smart Receiver Hookup Diagram

Step 1. Connect 120V AC/AC Receiver to power

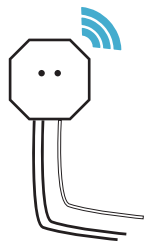


Step 2. Pair with Smart Home device

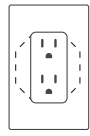


Step 3. Use App or Voice to control lights

WAV 120V AC/AC Smart Receiver

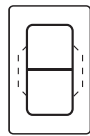


Device installs behind an outlet or wall switch



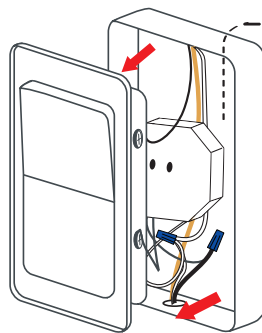
Outlet

OR

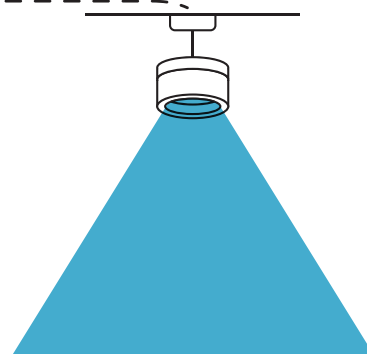


Switch

120V Switch



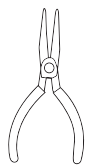
Lights



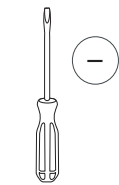
Tools Needed



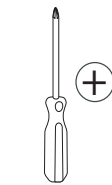
Wire Strippers



Needle Nose Pliers



Flat Head Screwdriver



#1 Phillips Screwdriver

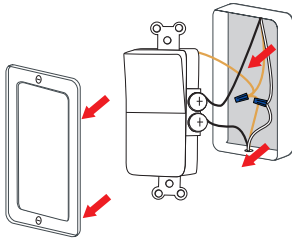
NOTE

- **ELECTRICIAN RECOMMENDED FOR INSTALLATION OF 120V WAV AC/AC RECEIVER.**
- **NOT EVERY LIGHT IS DIMMABLE.** Read instructions closely. Never use the WAV 120V AC/AC Smart Receiver to dim a non-dimmable light.
- **MAKE SURE 120 VOLT POWER IS TURNED OFF BEFORE INSTALLATION**
- **120 Volt Product – DO NOT** connect to low-voltage LED lighting.
- Do not over tighten any screws.
- Wire color is no guarantee of how the wiring was installed in the house.
- Make sure wires match up the incoming Hot wire (Line) to “IN [L]” and outgoing Hot wire (Load) to “OUT [L1]”

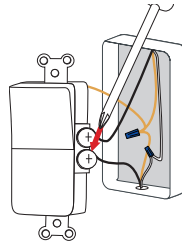
Step 1. Turn 120V AC Power Off and Remove Cover Plate

NOTE: 120V AC Power must be shut off at circuit breaker before beginning installation of WAV 120V AC/AC Receiver.

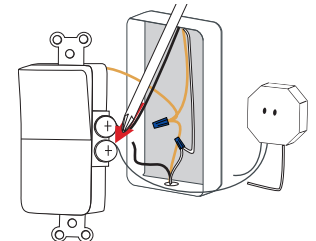
Step 2. Wire 120V AC/AC Receiver to Power



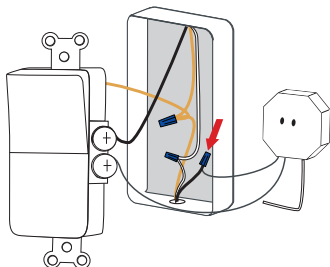
1. Unscrew switch from wall. Pull switch out for access to wires.



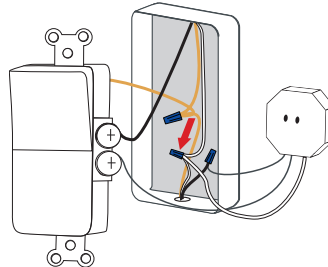
2. Loosen the screws on the side of the switch to remove the Black wire (Load). Use needle nose pliers to straighten the “hook” out of the wire.



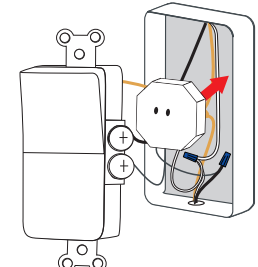
3. Take Black wire on WAV AC Receiver labeled “IN [L]” and connect to screw on switch where the Black wire (Load) was removed.



4. Take Black wire “out” (Load) from wall box and connect with wire nut to Black wire on WAV AC Receiver labeled “OUT [L1]”.

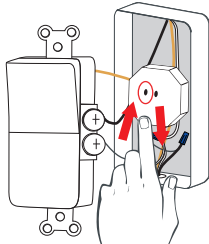


5. Take White wire labeled “COM [N]” and junction with set of White wires (Neutral) that are in the wall box.



6. Fold wires into wall box. Fit WAV AC Receiver into junction box in front of the wires, making sure the small antenna piece is not pinched.

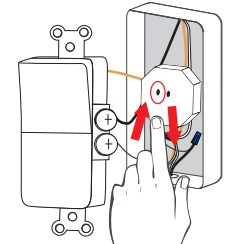
Step 3. Pairing WAV 120V AC Smart Receiver



1. While WAV AC Receiver is still accessible, turn 120V AC power on and click “RESET” button on the WAV AC Receiver device, making sure lights turn on.

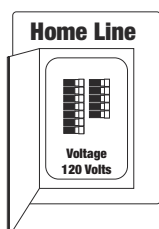


2. Pull up Smart Home app and select “Add Device”. Follow the rest of the instructions in the app to properly add WAV 120V AC Smart Receiver.

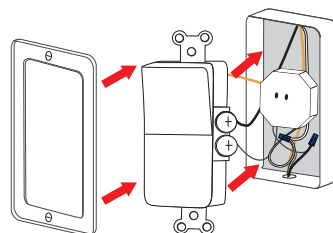


3. Quickly press and release “RESET” button 5 times to put it into pairing mode. In the Smart Home App, find the device. Follow the rest of the instructions in the smart home app to finish set up.

Step 4. Replace Cover



1. Once power has been tested and WAV AC Receiver has been paired in the smart device app, **turn 120V AC power back off**. Fit switch back into box, screw into wall, and replace cover plate.



2. Replace the switch and leave in the ON position OR remove switch and replace with a blank cover plate, **turn 120V AC power back ON**.

NOTE: The switch must remain in the ON position for the WAV AC Receiver to function.



Part Number Description

T-WAV-AC120V-R

120V AC/AC Smart Receiver designed to fit behind a 120V - 240V switch or outlet and turn any 120V - 240V product or lighting into an App or Voice controlled connected device. Allows for on / off and dimming capabilities.

NOTE: Not every light is dimmable. Please read through instructions closely, and never use the WAV 120V AC/AC Smart Receiver to dim a non-dimmable light. Do not plug in a non-dimmable light to be controlled by the outlet.

Overview of WAV 120V AC/AC Smart Receiver Hookup Diagram

Step 1. Connect 120V AC/AC Receiver to power

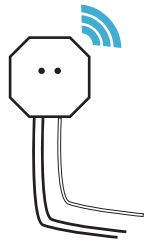


Step 2. Pair with Smart Home device

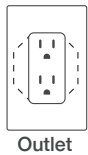


Step 3. Use App or Voice to control lights

WAV 120V AC/AC Smart Receiver

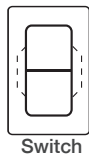


Device installs behind an outlet or wall switch



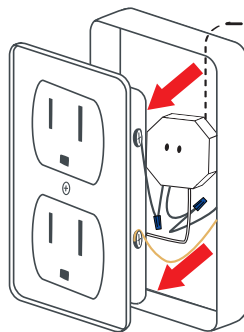
Outlet

OR

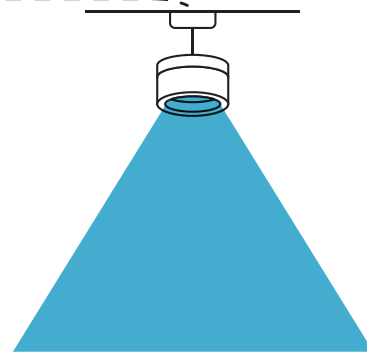


Switch

120V Outlet



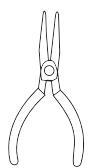
Lights



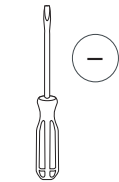
Tools Needed



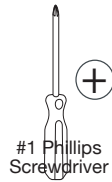
Wire Strippers



Needle Nose Pliers



Flat Head Screwdriver



#1 Phillips Screwdriver

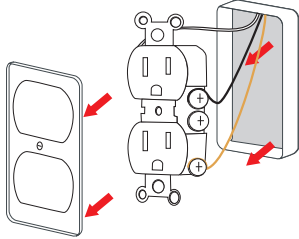
NOTE

- **ELECTRICIAN RECOMMENDED FOR INSTALLATION OF 120V WAV AC/AC RECEIVER.**
- **NOT EVERY LIGHT IS DIMMABLE.** Read instructions closely. Never use the WAV 120V AC/AC Smart Receiver to dim a non-dimmable light.
- **MAKE SURE 120 VOLT POWER IS TURNED OFF BEFORE INSTALLATION**
- **120 Volt Product – DO NOT** connect to low-voltage LED lighting.
- Do not over tighten any screws.
- Wire color is no guarantee of how the wiring was installed in the house.
- Make sure wires match up the incoming Hot wire (Line) to “IN [L]” and outgoing Hot wire (Load) to “OUT [L1]”

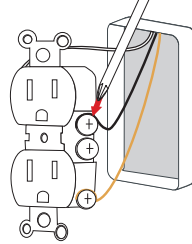
Step 1. Turn 120V AC Power Off

NOTE: 120V AC Power must be shut off at circuit breaker before beginning installation of WAV 120V AC/AC Receiver.

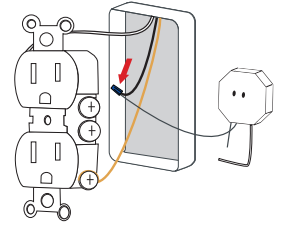
Step 2. Remove Cover Plate and Wire 120V AC/AC Receiver to Power



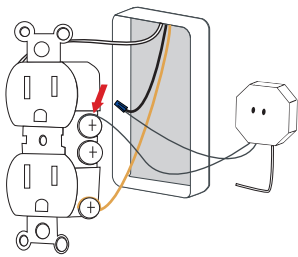
1. Remove receptacle cover plate and loosen screws to remove receptacle from junction box.



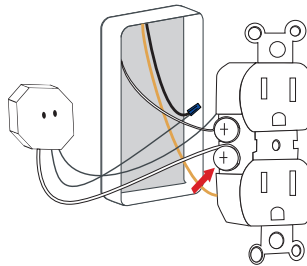
2. Loosen the screw on the receptacle holding the Hot wire (Line) and remove it.



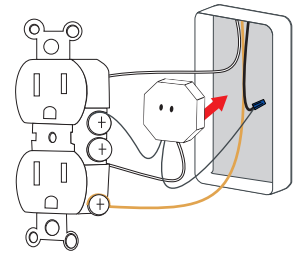
3. Use a wire nut to connect the Black wire from the WAV AC Receiver labeled "IN [L]" to the Hot wire (Line) from the junction box.



4. Use a wire nut and connect the Black wire on WAV AC Receiver labeled "OUT [L1]" to the gold screw on the receptacle.

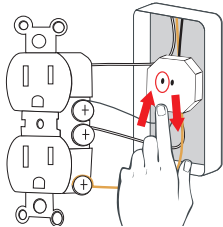


5. Attach the White wire from WAV AC Receiver labeled "COM [N]" to the silver screw on the receptacle (same side as White wire from junction box).

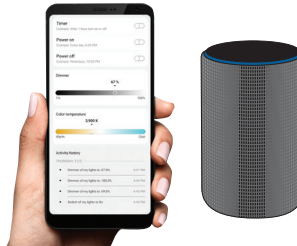


6. Fold wires into wall box. Fit WAV AC Receiver into junction box in front of the wires, making sure the small antenna piece is not pinched.

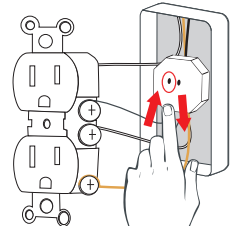
Step 3. Pairing WAV 120V AC Smart Receiver



1. While WAV AC Receiver is still accessible, turn 120V AC power on and click "RESET" button on the WAV AC Receiver device, making sure receptacle turns on.

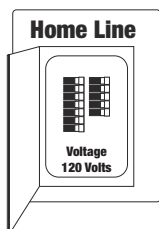


2. Pull up Smart Home app and select "Add Device". Follow the rest of the instructions in the app to begin a search for the WAV 120V AC Smart Receiver.

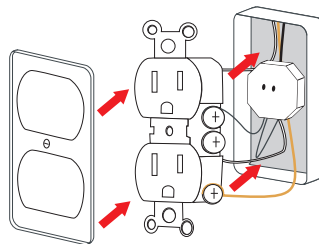


3. Quickly press and release "RESET" button 5 times to put it into pairing mode. In the Smart Home App, find the device. Follow the rest of the instructions in the smart home app to finish set up.

Step 4. Replace Cover



1. Once power has been tested and WAV AC Receiver has been paired in the smart device app, **turn 120V AC power back OFF.**



2. Fit outlet back into junction box, screw into wall, and replace cover plate. Replace the cover plate, **turn 120V AC power back ON.**