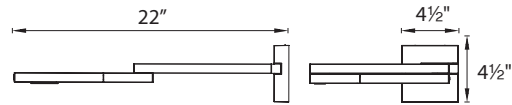
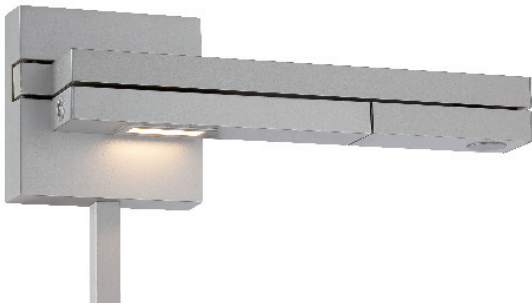


**FLIP** – model: BL-1021  
 dwelLED™ LED Swing Arms

**WAC LIGHTING**  
 Responsible Lighting®



Fixture Type:

Catalog Number:

Project: \_\_\_\_\_

Location: \_\_\_\_\_

**PRODUCT DESCRIPTION**

A clever LED swing arm reading light that folds-in completely to neatly and orderly fit within modern design elements. Integral memory touch dimmer conveniently located for fingertip control.

**FEATURES**

- Integral universal driver 100V-240V
- Aluminum construction
- Two 12 inch cord covers included
- Fingertip touch dimming on head
- ETL & cETL damp location listed
- For hard-wired and portable (8 foot cord) installation

**SPECIFICATIONS**

- **Construction:** Die-cast aluminum
- **Color Temperature:** 3000K
- **CRI:** 85

**ORDERING NUMBER**

Model#		Watt	LED Lumens	Delivered Lumens	Finish
<b>BL-1021R</b>	<i>Right</i>	<i>8.5 W</i>	<i>489</i>	<i>315</i>	<b>BZ</b> <i>Bronze</i>  <b>TT</b> <i>Titanium</i> 
<b>BL-1021L</b>	<i>Left</i>	<i>8.5 W</i>	<i>489</i>	<i>315</i>	

**BL-1021**  -

Example: **BL-1021R-BZ**

waclighting.com  
 Phone (800) 526.2588  
 Fax (800) 526.2585

**Headquarters/Eastern Distribution Center**  
 44 Harbor Park Drive  
 Port Washington, NY 11050

**Central Distribution Center**  
 1600 Distribution Ct  
 Lithia Springs, GA 30122

**Western Distribution Center**  
 1750 Archibald Avenue  
 Ontario, CA 91760