



EZC2

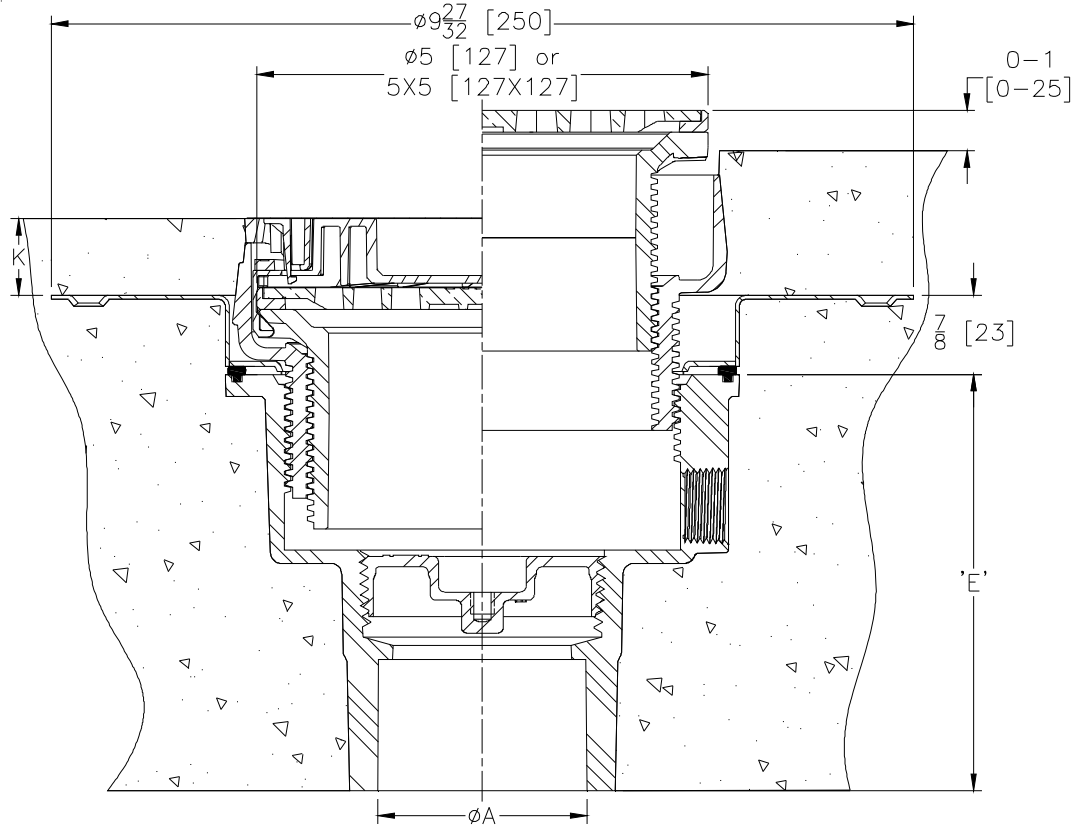
5" Top Assembly Adjustable Floor Cleanout with Deck Plate and EZ1™ Technology

SPECIFICATION SHEET

TAG _____

**PATENT
PENDING**

Dimensional Data (inches and [mm]) are Subject to Manufacturing Tolerances and Change Without Notice



Dimensions in Inches [mm]						Approx. Wt. Lbs [kg]	Strainer Type
Product Number		A	E	K			
PVC Body	ABS Body	Pipe Size	Body Height	Min	Max		
EZC2-PV2	EZC2-AB2	2-3 [51-76]	4-3/4 [121]	7/8 [22]	1-13/16 [46]	6 [3]	Nickel Bronze Round
EZC2-PV3	EZC2-AB3	3-4 [76-102]	3-3/4 [95]	7/8 [22]	1-13/16 [46]	6 [3]	Nickel Bronze Round
EZC2-PV2-ST	EZC2-AB2-ST	2-3 [51-76]	4-3/4 [121]	1-27/32 [47]	1-31/32 [50]	7 [3]	Nickel Bronze Square
EZC2-PV3-ST	EZC2-AB3-ST	3-4 [76-102]	3-3/4 [95]	1-27/32 [47]	1-31/32 [50]	7 [3]	Nickel Bronze Square
EZC2-PV2-SS	EZC2-AB2-SS	2-3 [51-76]	4-3/4 [121]	7/8 [22]	1-13/16 [46]	6 [3]	Stainless Steel Round
EZC2-PV3-SS	EZC2-AB3-SS	3-4 [76-102]	3-3/4 [95]	7/8 [22]	1-13/16 [46]	6 [3]	Stainless Steel Round
EZC2-PV2-ST-SS	EZC2-AB2-ST-SS	2-3 [51-76]	4-3/4 [121]	1-27/32 [47]	1-31/32 [50]	7 [3]	Stainless Steel Square
EZC2-PV3-ST-SS	EZC2-AB3-ST-SS	3-4 [76-102]	3-3/4 [95]	1-27/32 [47]	1-31/32 [50]	7 [3]	Stainless Steel Square

ENGINEERING SPECIFICATION:

Zurn EZ1™ Floor Cleanout, PVC or ABS solvent weld body, with gas and water tight cleanout plug, stainless steel deck plate and top assembly. EZ1 cleanout series is engineered to simplify product installation, comprised of concrete shield, up to 1" [25] of vertical post pour adjustment, pre-packaged shims for tilt correction, and integrated self contained square or round light duty scoriated cover in nickel bronze or stainless steel with rough-in cover for protection during the concrete pour. Cleanout is designed in accordance with ASME A112.36.2M.

SUFFIXES

___ -CC Stainless Steel Clamp Collar